

INSTRUCTIONS FOR ORDERING PARTS

All service parts should be ordered through your authorized H&S dealer. He will be able to give you faster service if you will provide him with the following:

1. Model & Serial Number - Both can be located on the front PTO Bearing Support Mount.
2. All reference to left or right apply to the machine as viewed from the rear.
3. Parts should not be ordered from illustration only. Please order by complete part number.
4. If your dealer has to order parts - give shipping instructions.

VIA truck - large pieces (please specify local truck lines)

VIA United Parcel Service (include full address)

H&S Mfg. Co.	
MARSHFIELD, WIS.	
MOD. NO.	<input type="text"/>
SER. NO.	<input type="text"/>

PLEASE RECORD NUMBERS FOR YOUR UNIT FOR QUICK REFERENCE

ABOUT IMPROVEMENTS

H&S IS CONTINUALLY STRIVING TO IMPROVE ITS PRODUCTS.

We must therefore, reserve the right to make improvements or changes whenever it becomes practical to do so, without incurring any obligation to make changes or additions to the equipment previously sold.

DECAL LOCATION

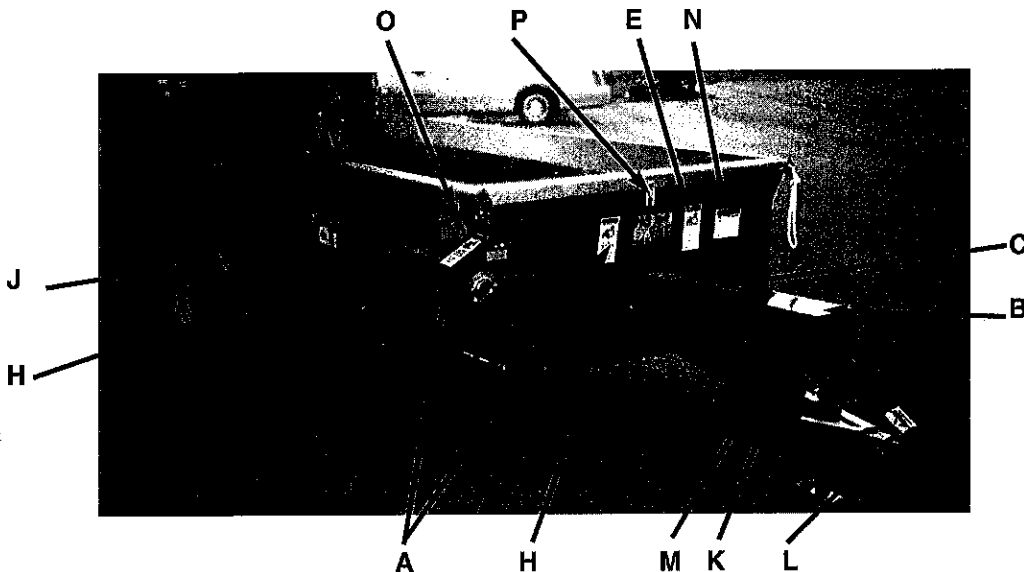
Your H&S Manure Spreader was manufactured with operator safety in mind. Located on the manure spreader are various decals to aid in operation, and warn of danger or caution areas. Pay close attention to all the decals on your Manure Spreader.

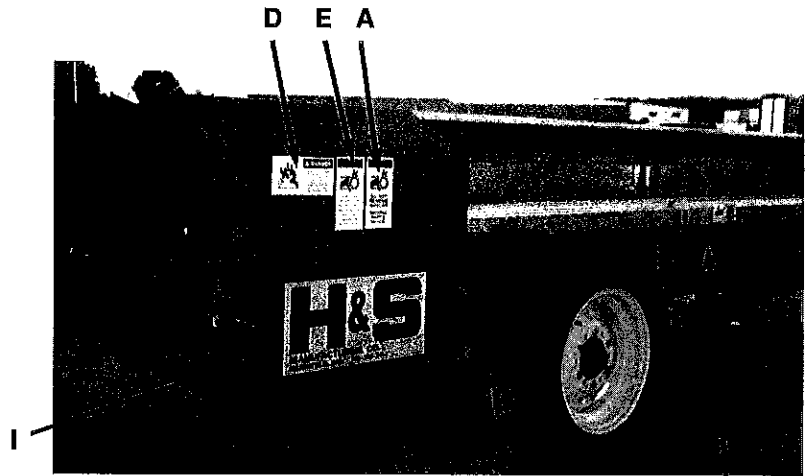


DO NOT REMOVE ANY OF THESE DECALS. IF DECALS ARE LOST, DAMAGED, OR IF MANURE SPREADER IS REPAINTED, REPLACE DECALS. REMEMBER: DECALS ARE FOR YOUR PROTECTION AND SAFETY.

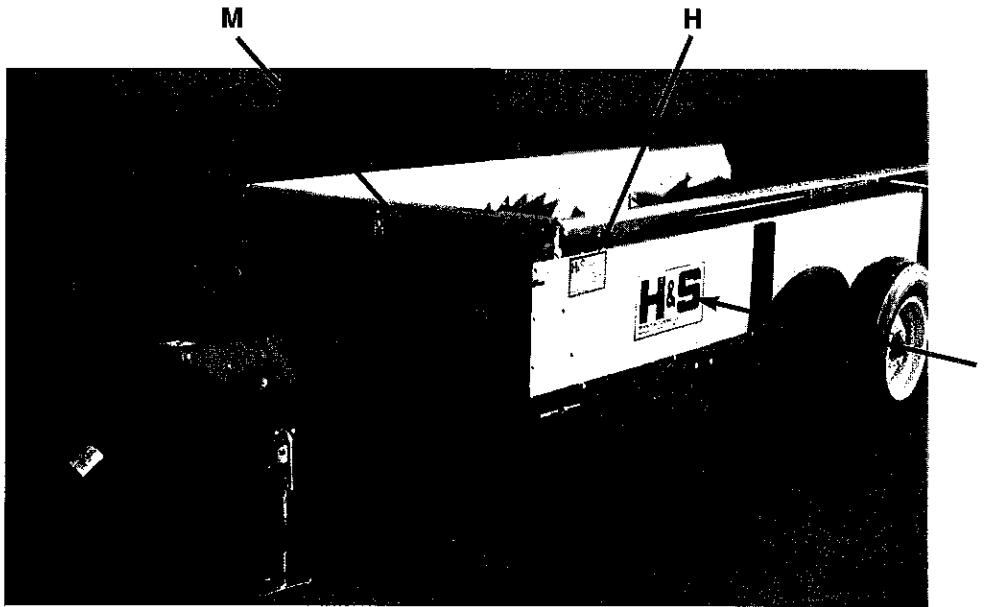
Listed below are the decals on your Manure Spreader. These decals may be ordered individually by part number or by ordering a complete set.

ITEM	PART NO.	DESCRIPTION
A	1494K	(3) Warning - Do Not Remove Shields
B	9194A	Danger - No Step
C	9194B	Danger - Never Allow Riders
D	111593A	(2) Danger - Stay Clear of Beater
E	1494J	(2) Warning - Do Not Hand Clean
F	71494A	(2) Warning - Do Not Operate
G		(2) Red Reflector
H		(3) Model 125
I		(2) H&S Decal (9x18)
J	12794	Warning - Do Not Remove Shields
K		Serial No.
L	Weasler	Danger - Rotating Driveline (H&S Decal 1494L)
M	1494A	(3) Warning - Do Not Operate
N	5896A	Warning - Help Avoid Injury
O	714-3189	Beater Disengage - Cleanout
P		FEMA Decal
	125-91698	Complete Set of Decals
Paint - H & S Red		
	ZX21	Gallon
	ZX22	Quart
	ZX23	Pint





F (Under Shield)



Shields Removed For Clarity



FIGURE 1

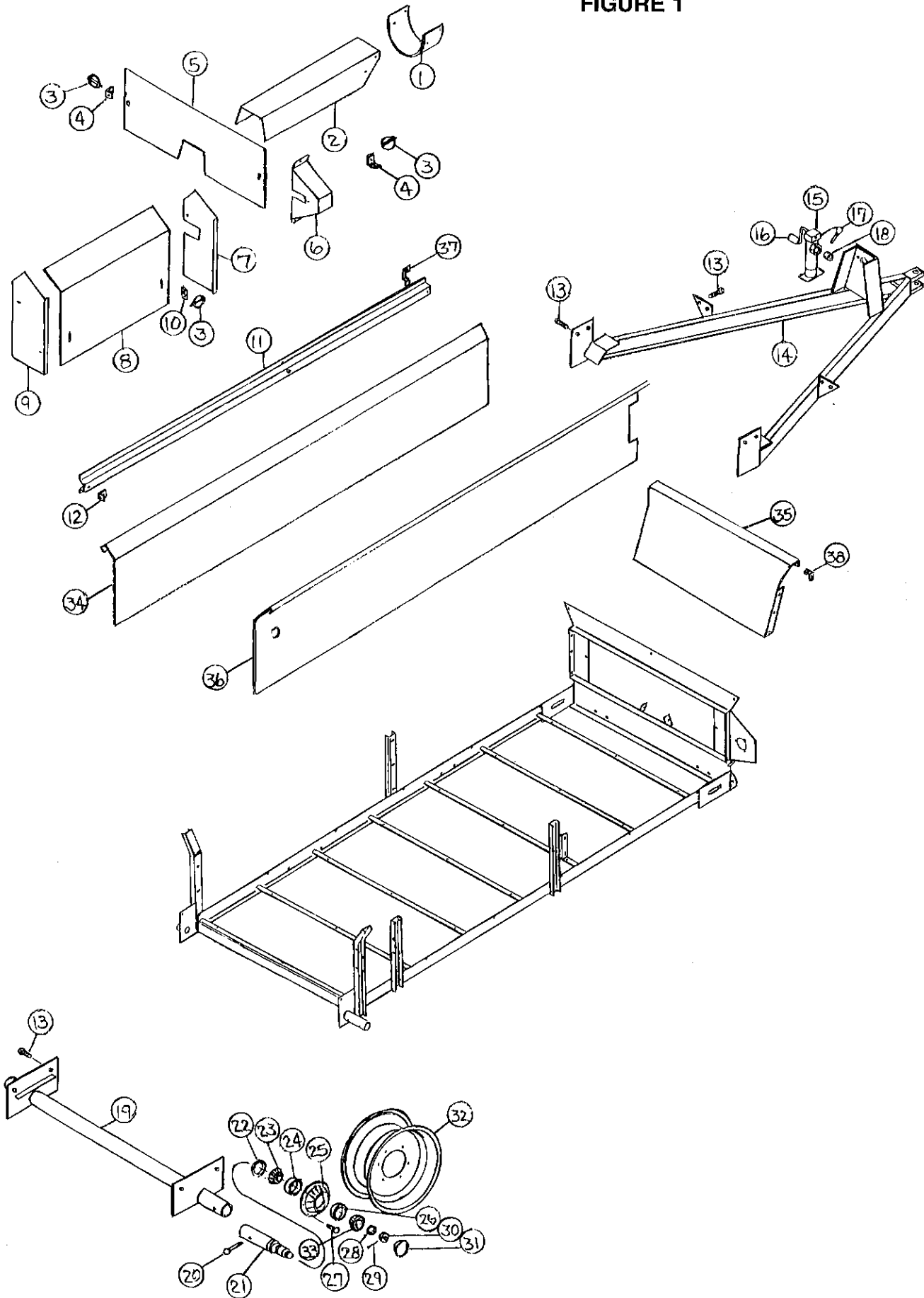
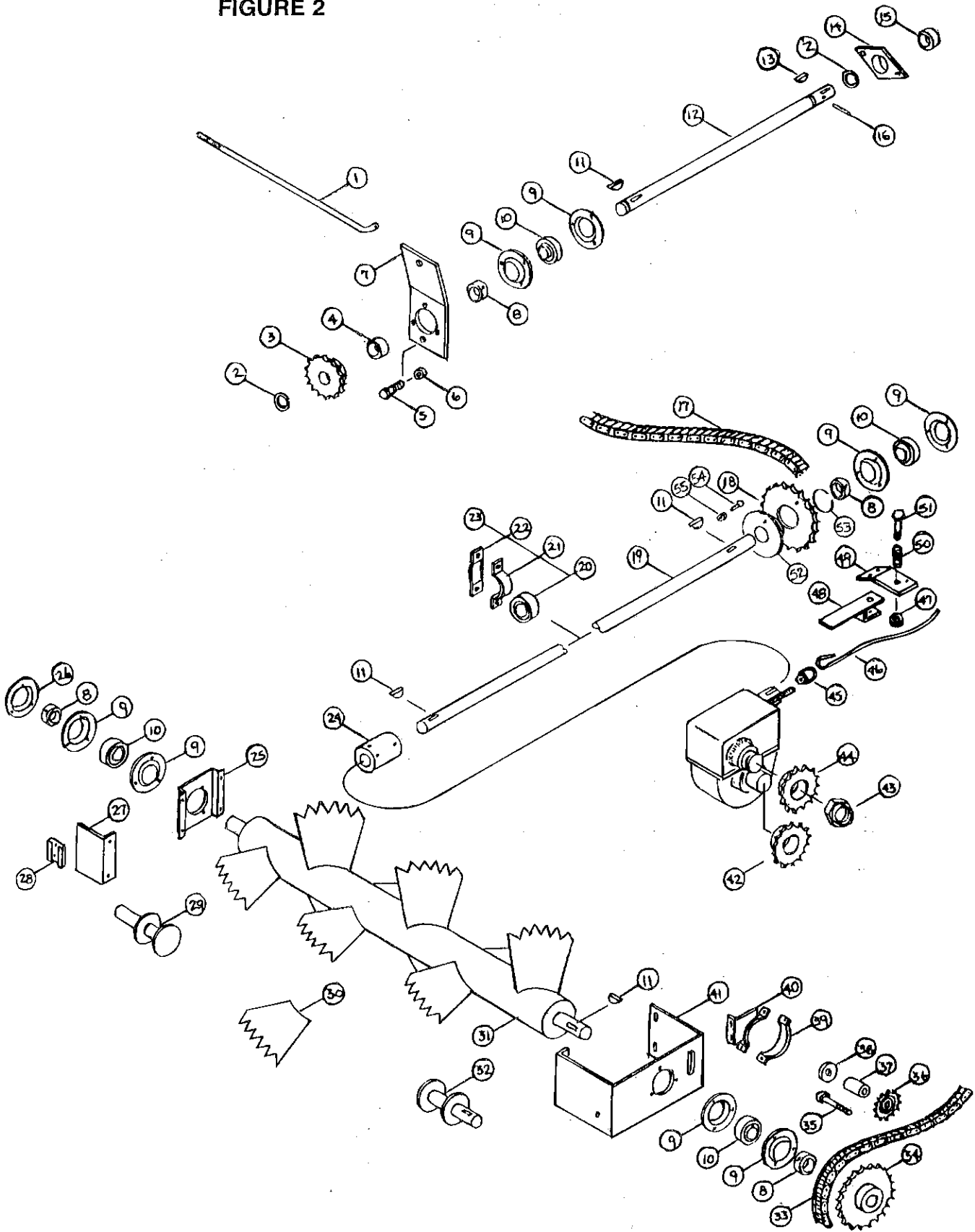


FIGURE 1
MODEL 125
SHIELDS, AXLE AND POLE ASSEMBLY

ITEM	PART NO.	DESCRIPTION
1.	F54	PTO Rubber Shield
2.	12N1	Shield
3.	F56	Clip Pin
4.	F92	Front Shield Bracket
5.	12N85	Front Poly Shield
6.	12N86	Front Side Shield
7.	12N4	Front Housing
8.	12N5	Cover
9.	12N6	Rear Housing
10.	F69	Shield Bracket
11.	12N87	Side Shield
12.	12N8	Side Shield Bracket
13.	R10	1/2" x 1-1/4" Bolt, GR.5
14.	12N10	Pole Assembly
15.	12N11	Jack Assembly
Not Shown	12N9	Jack Gear Replacement Kit
16.	12N12	Jack Handle
17.	12N13	Jack Pin and Chain
18.	12N14	Jack Mount
19.	12N15	Axle Tubing
20.	B10	Spindle Bolt GR.5
21.	12N16	Spindle
22.	12N17	Seal
23.	12N18	Inner Bearing
24.	12N19	Inner Race
25.	12N20	Hub
26.	12N21	Outer Race
27.	12N22	Hub Bolt
28.	B4	Washer
29.	B31	Cotter Pin
30.	B3	Nut
31.	12N23	Hub Cap
32.	12N24	Wheel
33.	12N25	Outer Bearing
34.	12N88	LH Side Panel
35.	12N89	Front Bolt In Panel
36.	12N90	RH Side Panel
37.	12N96	Front Side Shield Bracket
38.	WM111	Angle
Not Shown	12N79	Complete Hub Assembly

FIGURE 2



**FIGURE 2
MODEL 125
FRONT SHAFT, SIDE SHAFT AND BEATER**

ITEM	PART NO.	DESCRIPTION
1.	12N26	Tightener Rod
2.	F73	Snap Ring
3.	F13	20T Sprocket
4.	R15	Spacer
5.	R10	1/2" x 1-1/4" Bolt GR.5
6.	9S17	1/2" Lock Nut
7.	12N27	Front Adjustment Plate
8.	F16	Lock Collar
9.	F14	Bearing Flange
10.	F115	Bearing (Grease Type)
11.	5B9	3/8" x 1-1/4" Woodruff Key
12.	12N28	Front Shaft
13.	5B10	1/4" x 1" Woodruff Key
14.	12N29	Pillow Block Bearing
15.	12N30	Spacer
16.	F26	5/16" x 2-1/4" Roll Pin
17.	12N91	#60 Roller Chain 99 Pitches
18.	23N191	Shear Sprocket 30T
19.	12N92	Side Shaft
20.	12N33	Bearing
21.	12N34	Bearing Holder
22.	12N35	Bearing Cover
23.	12N36	Bearing Assembly
24.	D12	Connector
25.	R16	Shaft Support
26.	F95	Bearing Flange Guard
27.	12N37	SMV Sign Holder
28.	F97	SMV Holder
29.	12N38	LH Beater Stub Shaft
30.	12N39	Beater Blade
31.	12N40	Beater
32.	R34	RH Beater Stub Shaft
33.	12N41	#60 Chain 64 Pitches
34.	D26	30T Sprocket
35.	A19	1/2" x 3-1/2" Carr. Bolt GR.5
36.	12N42	Idler Sprocket
37.	12N43	Spacer
38.	12N44	Washer
39.	D100	Ring for Beater Brace
40.	12N45	Gearbox Brace
41.	12N46	Beater Rear Support
42.	D18	16T Sprocket
43.	G35	Stake Nut
44.	D23	16T Sprocket
45.	F31	Cable Loop
46.	12N47	Cable
47.	A14	3/8" Nylock Nut
48.	12N48	Shut-Off Lever
49.	12N49	Shut-Off Bracket
50.	5B6	Shut-Off Spring
51.	12N51	3/8" x 2-3/4" Bolt GR.5
52.	23N190	Shear Hub
53.	23N189	Snap Ring
54.	D31	5/16" x 1-1/2" Shear Bolt GR.5
55.	D81	5/16" Lock Nut
Not Shown	D38	#60 Offset Link
Not Shown	D39	#60 Connector Link

FIGURE 3

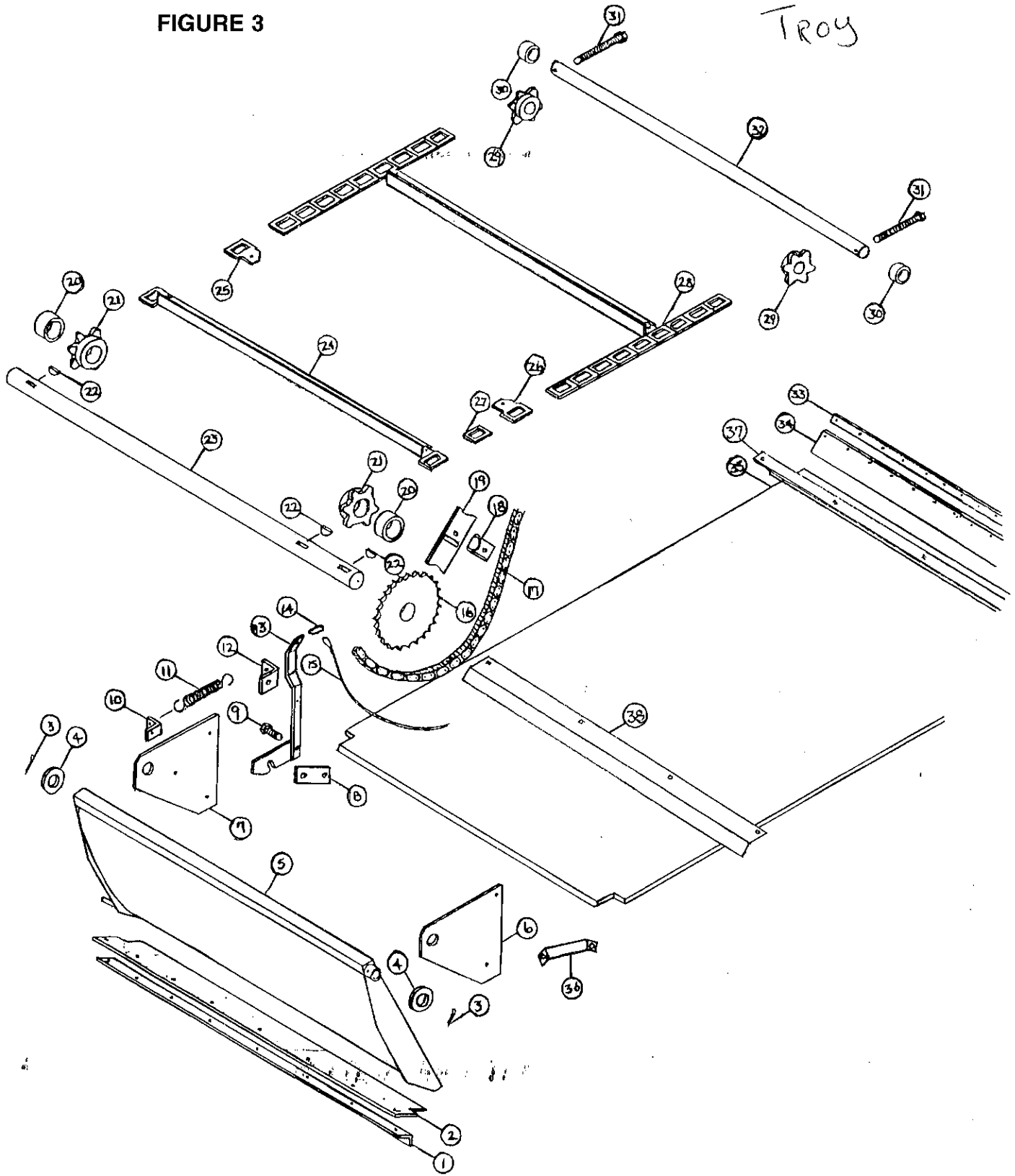
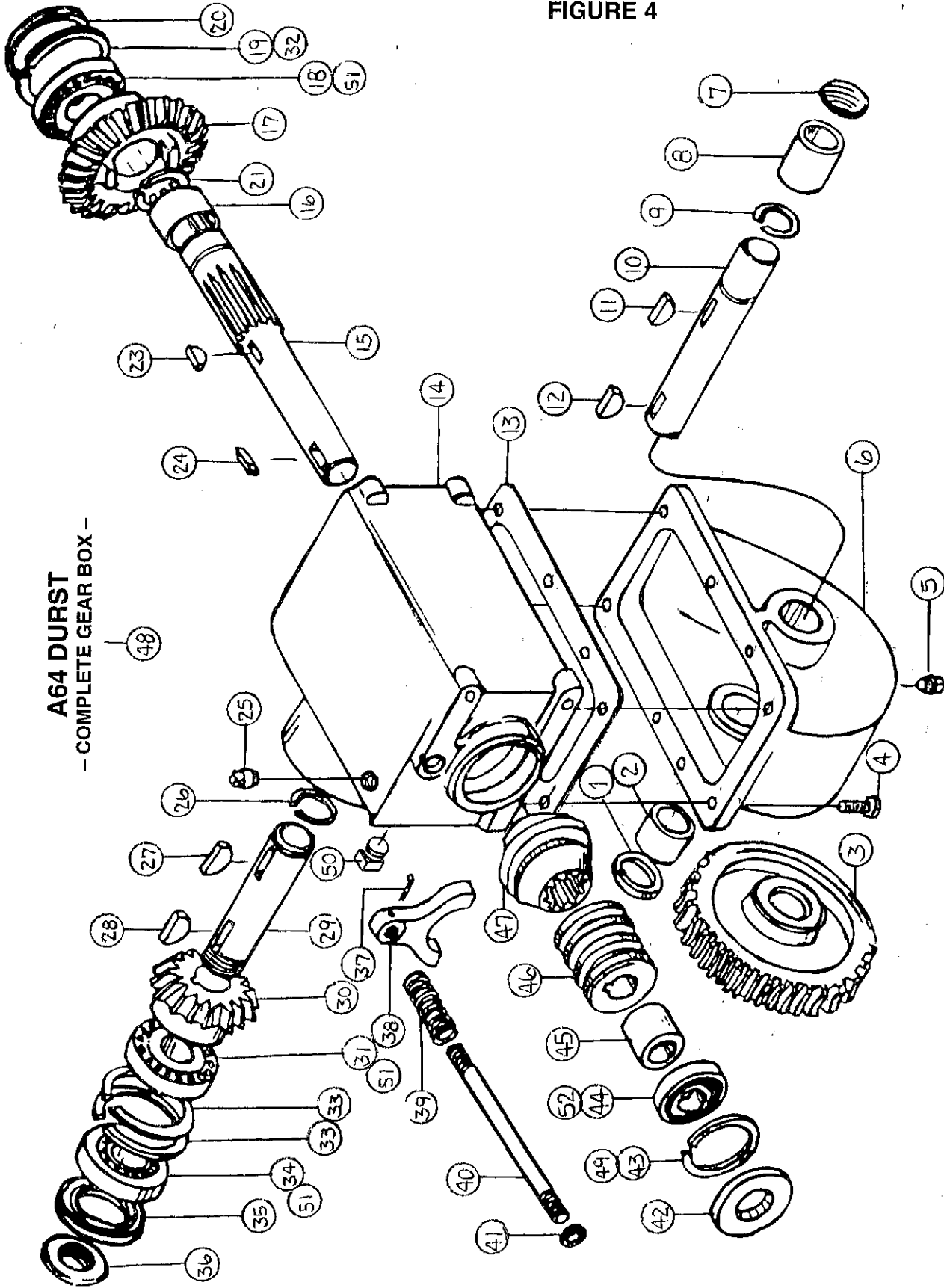


FIGURE 3
MODEL 125
APRON, CHAIN, FLOOR & PAN

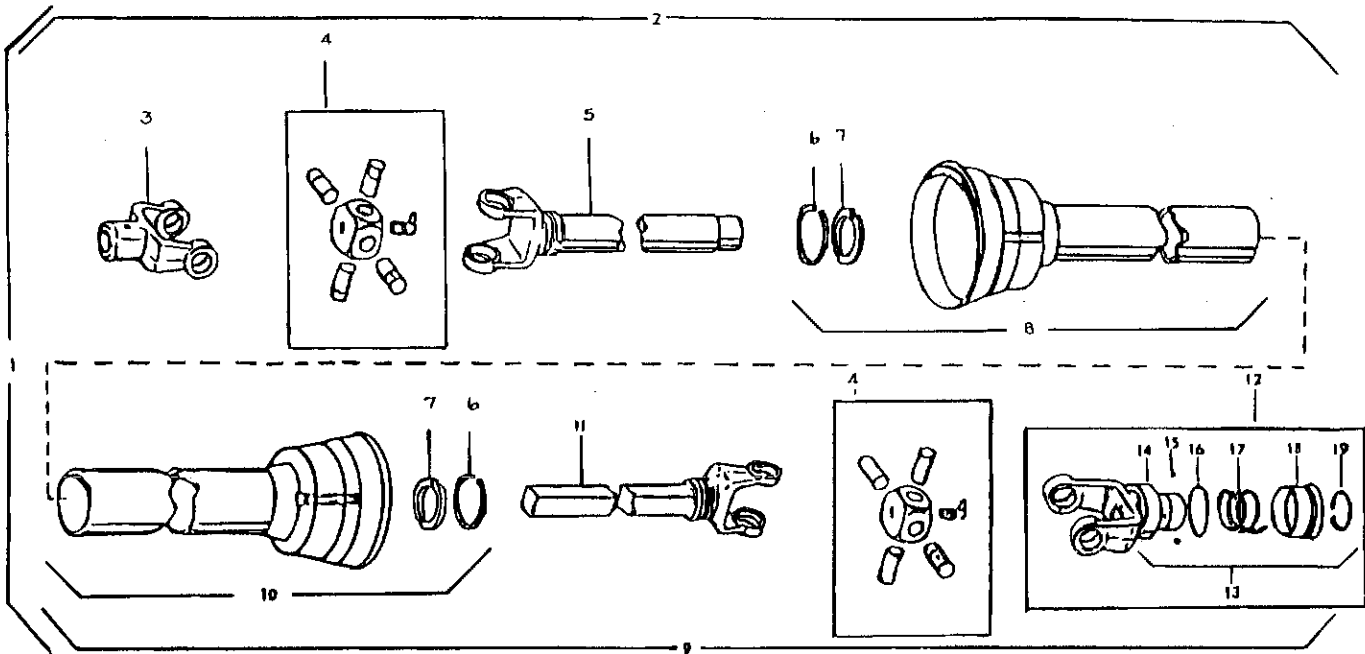
ITEM	PART NO.	DESCRIPTION
1.	12N52	Rubber Flap Angle
2.	12N53	Rubber Flap
3.	R70	Cotter Pin
4.	R3	Pan Spacer
5.	12N54	Pan
6.	12N55	RH Pan Support
7.	12N56	LH Pan Support
8.	12N57	Trip Lever Plate
9.	R30	1/2" x 2" Bolt
10.	R26	Spring Angle
11.	R27	Spring
12.	R60	Trip Lever Stop
13.	12N58	Trip Lever
14.	R31	Clip
15.	12N59	Trip Rope
16.	12N60	40T Sprocket
17.	12N41	#60 Chain 64 Pitches
18.	D20	Chain Tightener
19.	12N61	Brace Gearbox to Drive Shaft
20.	A39	Spacer
21.	A4	Conveyor Drive Sprocket 6T
22.	5B9	3/8" x 1-1/4" Key
23.	12N62	Drive Shaft
24.	12N63	67XH Slat with Att. Link
25.	11S26	67XH Att. Link LH
26.	11S27	67XH Att. Link RH
27.	11S29	67XH Connector Links
28.	12N64	67XH Complete Apron
29.	12N65	6T Idler Sprocket
30.	12N66	Spacer
31.	A7	1/2" x 9-1/2" Bolt GR.5
32.	12N67	Idler Shaft
33.	12N97	Angle for Rubber
34.	12N69	Front Rubber
35.	12N93	Floor Poly Bonded
36.	12N50	Brace
37.	12N94	Front Floor Brace
38.	12N95	Rear Floor Brace
Not Shown	D38	#60 Offset Link
Not Shown	D39	#60 Connector Link
Not Shown	D92	Apron Slow Down Sprocket 48T
Not Shown	12N80	Apron Speed Up Sprocket 32T

FIGURE 4



**FIGURE 4
MODEL 125
GEAR BOX**

ITEM	PART NO.	DESCRIPTION
1.	G1	Seal
2.	G2	Bushing
3.	G3	36T Gear
4.	G4	Capscrews (8)
5.	G5	Drain Plug
6.	G6	Gear Housing - Lower
7.	G7	Expansion Plug
8.	G2	Bushing
9.	G9	Snap Ring
10.	G10	Low Speed Output Shaft
11.	G11	1/4" x 1-1/8" Key
12.	G12	5/16" x 1" Key
13.	G13	Gasket
14.	G14	Gear Housing - Top
15.	G15	Shaft
16.	G16	Bushing
17.	G17	24T Gear
18.	G18	Bearing
19.	G55	Snap Ring
20.	G20	Cap
21.	G9	Snap Ring
23.	G22	1/4" x 7/8" Key
24.	G23	5/16" x 1-1/4" Square Key
25.	G24	Plug Vent
26.	G25	Snap Ring
27.	G26	3/8" x 1-1/4" Key (Hardened)
28.	5B9	3/8" x 1-1/4" Key
29.	G28	Hi-Speed Output Shaft
30.	G29	16T Gear
31.	G53	Bearing
32.	G69	Shim (When Needed)
33.	G55	Snap Ring (2)
34.	G33	Bearing
35.	G34	Seal
36.	G35	Stake Nut
37.	G95	1/8" x 1-1/2" Cotter Key
38.	G37	Yoke
39.	G38	Spring
40.	G39	Clutch Rod
41.	G40	Seal
42.	G41	Seal
43.	3G19	Snap Ring
44.	L3G24	Bearing
45.	G44	Spacer Ring
46.	G45	Worm
47.	G46	Clutch 18T Spline
48.	D7	Gearbox Complete
49.	G92	Shim (When Needed)
50.	G87	Plug 1/8-27 NPT
51.	G54	Race
52.	3G18	Race



**FIGURE 5
MODEL 125
PTO ASSEMBLY**

ITEM	PART NO.	DESCRIPTION
1.	12N71	PTO Assembly Complete With Shields
2.	12N72	Machine Half PTO with Shield
3.	12N73	End Yoke Machine Half
4.	W-Kit	W/Repair Kit
5.	12N74	Yoke and Tube
6.	24N26	Bearing Retainer
7.	S206	Nylon Bearing
8.	12N75	Inner Guard Including Item #6 & #7
9.	12N76	Tractor Half PTO with Shield
10.	12N77	Outer Guard Including Item #6 & #7
11.	12N78	Yoke and Shaft
12.	S224	Lock Yoke Assembly
13.	S225	Spring Lock Repair Kit
14.	S226	Cover
15.	S212	Stainless Ball
16.	S227	Washer
17.	S228	Spring
18.	S229	Collar Assembly
19.	S215	Retaining Ring
Not Shown	S402	PTO Safety Manual